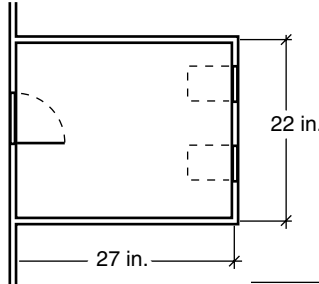


LESSON
7-1

Problem Solving
Ratio and Proportion

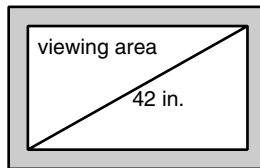
1. For a certain type of tropical fish, it is recommended that you have no more than 2 fish per 10 gallons of water. How many fish could you have in a fish tank that holds 35 gallons of water? _____

2. A library is being expanded, and the new wing's length is to be 50 feet greater than its width. A diagram of the new wing is shown. What are the actual dimensions of the new wing? _____



3. The *Titanic* was 882 feet 9 inches long. You can build a model of the ship that is 2 feet 6 inches long and 6 inches high. What was the approximate height of the *Titanic* to the nearest inch? _____

4. The *aspect ratio*, or ratio of length to width of the viewing area, of a wide-screen 42-inch television is 16 : 9. What are the dimensions of the rectangular viewing area to the nearest tenth? _____



Choose the best answer.

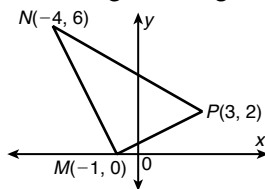
5. In a museum gift shop, a miniature *Acrocantosaur* is 22.8 centimeters long and 15.9 centimeters tall. The package says that the actual dinosaur was approximately 9 meters long. About how tall was the dinosaur?

- A** 6.3 m **C** 12.9 m
B 7.7 m **D** 40.3 m

6. A model airplane has a wingspan of about 15 inches. The actual airplane has a wingspan of 30 feet and a length of 42 feet. How long is the model?

- F** 11 in. **H** 21 in.
G 14 in. **J** 30 in.

7. Write a ratio expressing the slope of the hypotenuse in right triangle *MNP*.



- A** $-\frac{7}{4}$ **C** $-\frac{1}{2}$
B $-\frac{4}{7}$ **D** $\frac{1}{4}$

8. The ratio of the interior angle measures of a pentagon is 2 : 2 : 3 : 4 : 6. What is the measure of the smallest angle to the nearest degree?

- F** 32° **H** 95°
G 64° **J** 191°